



MONTHLY MEMBERSHIP PROGRESS REPORT

District 3234H1

Results as of: 05/31/2019

GMT: JAYESH THAKKAR

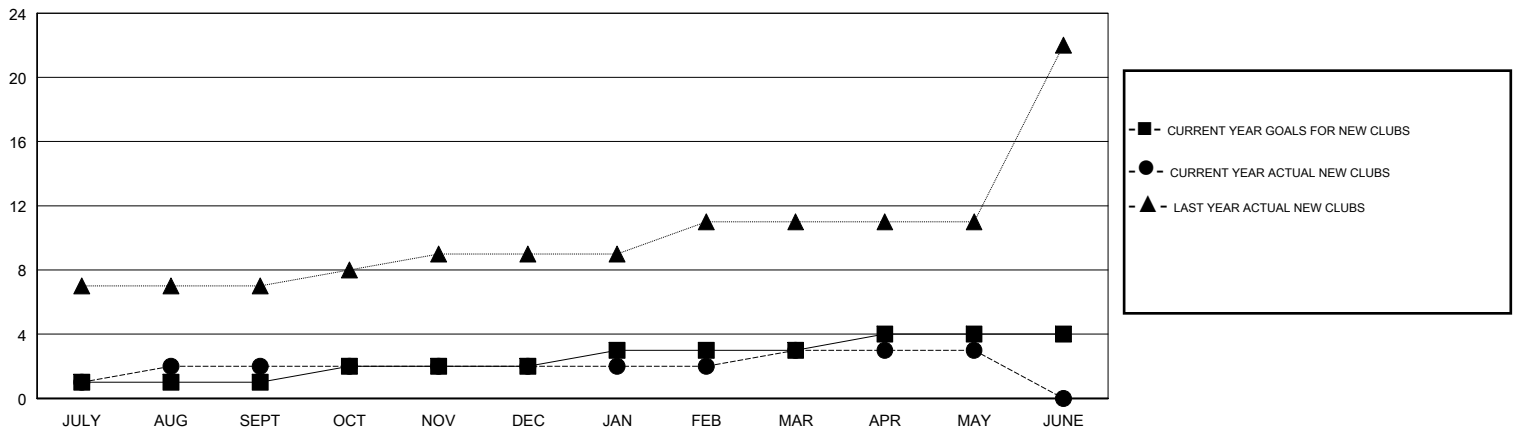
LOCATION INDIA

GMT CA

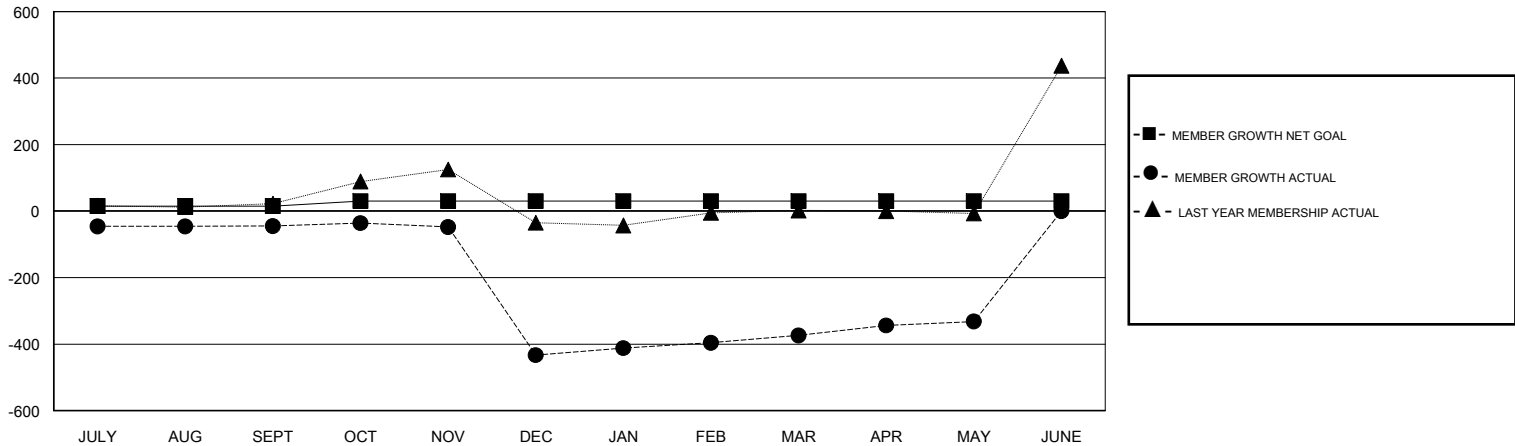
Clubs			
RESULTS FOR 2018-2019			
QUARTER	NEW CLUB GOAL	NEW CLUBS	DROPPED CLUBS
JULY/AUG/SEPT	1	2	0
OCT/NOV/DEC	1	0	8
JAN/FEB/MAR	1	1	1
APR/MAY/JUNE	1	0	0

Members			
RESULTS FOR 2018-2019			
QUARTER	MEMBER GROWTH NET GOAL	MEMBER GROWTH ACTUAL	DROPPED MEMBERS ACTUAL (including transfers)
JULY/AUG/SEPT	15	84	126
OCT/NOV/DEC	15	55	441
JAN/FEB/MAR	0	323	84
APR/MAY/JUNE	0	100	54

GOALS AND ACTUAL NEW CLUBS CUMULATIVE



GOALS AND ACTUAL MEMBERS CUMULATIVE



DROPPED CLUBS: 9	55 CLUBS OF 97 ADDED 1 OR MORE NEW MEMBERS	<u>GENDER DISTRIBUTION</u>	
DROPPED MEMBERS		MALE	2,090 (64.61%)
DECEASED	0	FEMALE	1,145 (35.39%)
CLUB CANCELLED	311	Women Percentage Fiscal Year Goal: 20%	
OTHER	394	TOTAL FAMILY UNIT MEMBERS	1,946
TOTAL	705	FAMILY MEMBERS PAYING HALF DUES	1,010

[CLICK HERE FOR CUMULATIVE MEMBERSHIP DATA](#)